

V6 ViewPro Series

MAXHUB ViewPro series for corporate delivers a superior video conferencing experience and effortless collaboration that creates a more efficient and engaging workplace. Powered by Windows based PC Module, the all-in-one design integrates an intelligent dual-camera, advanced audio processing, interactive whiteboarding, and an intuitive meeting launcher into one complete collaboration display. The powerful combination makes meetings more dynamic and introduces flexible, creative interaction to your organization.



4K

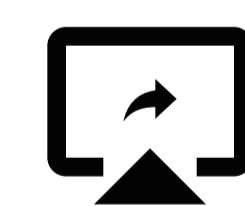
Professional 4K Display

High Color Accuracy, $\Delta E \leq 2$
Wide Color Gamut, NTSC 90%



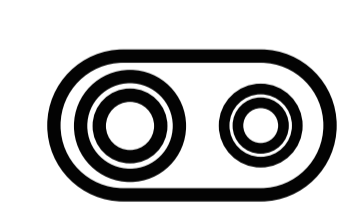
Touch Screen

20 Touch Points,
Minimum Object Recognition - 2mm



Wireless Screen Sharing

Share your screen through
MAXHUB Share App



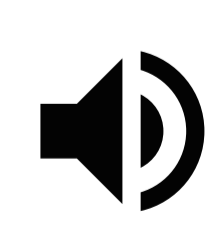
Built-in Camera

Dual Camera(48MP+8MP)
3x Optical Zoom
WDR Technology Supported



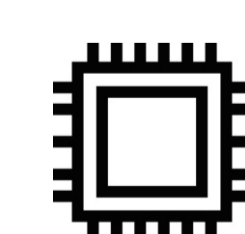
Built-in Microphone

12 meters of voice pick-up
8 mics arrays, clear conversations



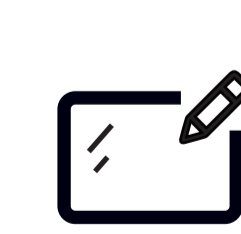
Built-in Speaker

2.1 Channel
2x 10W + 20W



10th Gen Intel CPU

Powerful performance, fluid experience
* With use of MAXHUB PC Module



Smart Whiteboard

OCR supported,
Multiple built-in templates

Display

Model	V6530	V8630
Diagonal Size(inch)	65	86
Backlight	Direct-lit LED	Direct-lit LED
Panel Technology	VA	VA
Aspect Ratio	16 : 9	16 : 9
Resolution	3840 x 2160	3840 x 2160
Response Time	6.5ms	8ms
Brightness(typ)	350cd/m ²	350cd/m ²
Contrast Ratio	5000 : 1	4000 : 1
Viewing Angle	178°/178°	178°/178°
Color Gamut(typ)	90% NTSC	90% NTSC
Display Orientation	Landscape	Landscape
Operating Hour	16/7	16/7

Dimension&Weight

Product Dimensions(WxHxD)	1500 x 921 x 88 mm 59.06 x 36.26 x 3.46 inch	1969 x 1184 x 97 mm 77.52 x 46.61 x 3.82 inch
Shipping Dimensions(WxHxD)	1638 x 1005 x 208mm 64.49 x 39.57 x 8.19 inch	2121 x 1304 x 225 mm 83.50 x 51.34 x 8.86 inch
Net Weight(kg /pounds)	37.3 kg / 82.23 pounds	60.6kg / 133.6 pounds
Gross Weight(kg /pounds)	49.0kg / 108 pounds	81.5kg / 179.68 pounds
Wall Mount(VESA)	600 x 400mm / 23.6 x 15.75inch	800 x 600mm / 31.50 x 23.62inch
Screws For VESA	M8 x 25mm / M8 x 0.99inch	M8 x 25mm / M8 x 0.99inch

POWER

Power Supply	AC100-240V,50/60Hz	AC100-240V,50/60Hz
Max Power Consumption	350W	450W
Standby	≤0.5W	≤0.5W

Touch System

Touch Sensor	IR
Accuracy	± 1mm
Max Touch Points Supported	20
Object Recognition Range	≥2mm
Glass	Zero parallax , 3mm Angi-glare, Antibacterial
Supported Operating System(Touch Return)	Windows10/Windows8/Windows7/WindowsXP/ Android/Linux/Mac OS X/Chrome OS

Connectivity

Input	HDMI IN x 1 , USB 2.0 x 1, USB 3.0 x 2, TOUCH 2.0 x 1 , USB Type-C x 2
Audio	Audio out x 1
Control	RS232 x 1
PC Module Slot	Yes, 3840 x 2160@60fps
PC Module	MAXHUB PC Module
Wifi Module	SI06

Camera/Audio/Microphone

Built-in Camera	Yes , Dual Camera 48MP(fixed lens)+8MP(with 3x optical zoom)
Camera Features	Auto Frame / Speaker Tracking
Built-in Speakers	2.1 Channel , 10W x 2 + 20W
Microphone Array	8 x Far-field , beam-forming microphone - max 12m range

Environment

Operating Temperature	0 C ~40 C
Storage Temperature	10%~90%RH
Operating Humidity	-20 C ~60 C
Storage Humidity	10%~90%RH

What's In The Box

Standard Power Cord, 1 x Wifi module, 2 x Passive Stylus, 1 x Wall Mount, 1 x Type-C Cable (1.8m | 70.9inch)

Optional

wireless dongle



ST41B



ST23C



EST09



EST11