



MAXHUB UC P10

**PREMIUM PERFORMANCE AND PROFESSIONAL QUALITY
AT THE PERFECT PRICE POINT**

HD 1080p Pro PTZ Camera With 12x Optical Zoom

The MAXHUB UC P10 camera brings effortless access to mid-to-large video conferencing. Combining exceptional 1080p image quality with premium 12x optical zoom, the P10 brings every conversation to life. This wide-angle camera with PTZ control represents a new generation of crystal-clear collaboration. HD 1080p images bring depth to remote interactions, while intelligent colour optimization ensures you never miss a crucial detail.



Superior HD 1080p Clarity in Any Environment

Panasonic 1/2.7" CMOS | 2D & 3D DNR | WDR

- > Low lighting conditions aren't a problem anymore. With pioneering 2D and 3D DNR and WDR technology, the P10 can deliver crisp and clear image quality, even in difficult situations. Class-leading camera lens promise 1080p professional visuals, at any distance. Mid to large-sized meetings never looked so good.



After 2D & 3D DNR

Before 2D & 3D DNR



After WDR

Before WDR

Superior HD 1080p Clarity
in Any Environment



Tilt $\pm 30^\circ$



HFoV 72.5°



Pan $\pm 170^\circ$

Wide-angle PTZ Performance for Complete Coverage

Tilt $\pm 30^\circ$ Pan $\pm 170^\circ$ | HFoV 72.5° | Up to 255 presets

- Make sure everyone in your meeting gets the attention they deserve. HFoV 72.5° aligned with wide-angle pan and tilt control ensures full-room visibility. You can choose from 255 presets to help you jump between whiteboards and speakers instantly. With whisper-quiet motor functionality, your P10 camera won't steal the spotlight from your conversation.



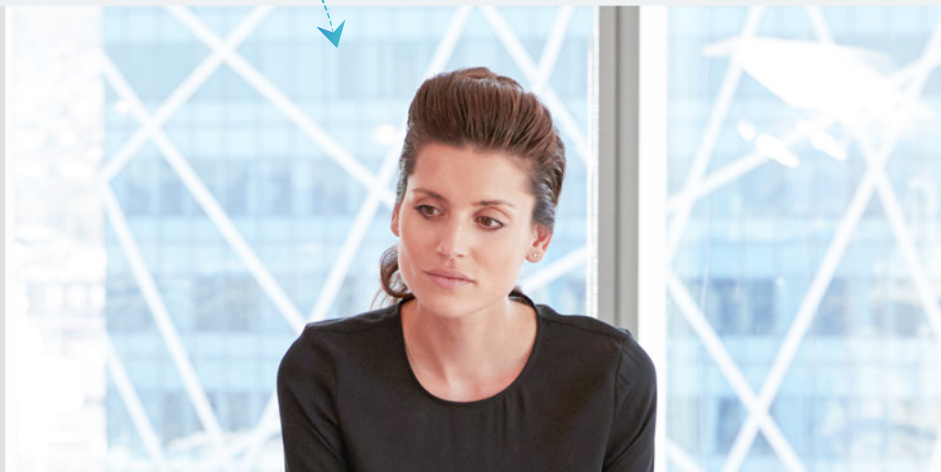
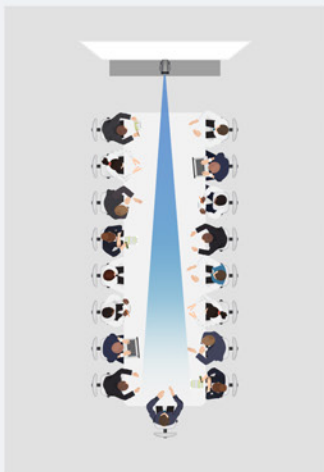
12x Optical Zoom and 16x Digital Zoom

12x optical zoom | 16x digital zoom

- Focus on the parts of your meeting that matter most to you. 12x optical zoom and 16x times digital zoom means you can bring your audience's attention to even the finest details of your presentation, without any loss of clarity. Responsive autofocus keeps images sharp and clear, even after zooming.



12x optical zoom





Flexible Interoperability with Current Collaboration Tools

RS232 In & Out

- You may continue using the products you like most! The P10 is a flexible camera that can work with a host of popular in-room devices and meeting tools based on RS232 protocol communication . We prioritize interoperability so you don't have to rip and replace technology to upgrade your meeting room. Build on your current investments and bring new value to your meetings.



Plug and Play Deployment with USB Simplicity

USB 3.0*1

- Forget complicated provisioning schedules and lengthy set-up times. The P10 simply plugs into your device with a USB cord for instant deployment. Just connect to your existing meeting room monitor or display and you're ready to launch the perfect video experience.

Specification

Camera Parameters

Pixel	207M
Video System	1080P, 720P, 540P, 480P, 360P, 240P etc.
Sensor	1/2.7inch, CMOS
Scanning Mode	Progressive
Lens	12x, f3.5mm~42.3mm, F1.8 ~ F2.8.
Digital Zoom	16x
Minimal Illumination	0.5 Lux @ (F1.8, AGC ON)
Shutter	1/30s~1/10000s
White Balance	Auto, Indoor, Outdoor, One Push, Manual, VAR(2500K~8000K).
Backlight Compensation	Support
Digital Noise Reduction	2D&3D Digital Noise Reduction.
Video S/N	≥55dB
Horizontal Angle of View	72.5°~ 6.9°
Vertical Angle of View	44.8°~ 3.9°
Horizontal Rotation Range	±170°
Vertical Rotation Range	-30°~ +30°

Pan Speed Range	1.7°~ 100°/s
Tilt Speed Range	0.7°~ 28°/s
H & V Flip	Support
Image Freeze	Support
Number of Preset	255
Preset Accuracy	0.1°
Video Format	YUY2 (BULK): max to 1080P@30fps YUY2 (ISOC): max to 1080P@30fps H.264 AVC: max to 1080P@30fps H.264 SVC: max to 1080P@15fps MJPEG: max to 1080P@28fps

USB Featured

Operate System	Windows 7, Windows 8, Windows 10, Mac OS X, Linux, Android
Color System / Compression	YUV 4:2:2 / H.264 / MJPEG

Specification

I/O Port

USB 3.0	1
RS232 IN	1
RS232 OUT	1
DC IN	1

Physical Specifications

Dimension L×H×D	128.5×118×156.2mm
Net Weight	0.91Kg

Power

Input Voltage	DC 12V
Current Consumption	1.0A (Max)
Power Consumption	12W (Max)

Environmental Conditions

Operation Temperature	-10°C ~ 40°C
-----------------------	--------------

Storage Temperature	-40°C ~ 60°C
---------------------	--------------

Statement

Size and weight vary by configuration and manufacturing process, please refer to the actual product.

The product images are for illustrative purposes only and may slightly differ in appearance, colour, size, etc. from the actual product.

The description, illustrations, etc. in this document may subject to change in accordance with the latest product specification and performance.

Should the above-mentioned change in the document become necessary, the document may be updated without written notice.

MAXHUB



maxhubsales@cvte.com



www.maxhub.com/en/



MAXHUB



MAXHUB



MAXHUB_Global