



America

# CERTIFICATE

No. Z1 14 12 81824 031

**Holder of Certificate:** Milestone AV Technologies

6436 City West Parkway  
Eden Prairie MN 55344  
USA



**Certification Mark:**



**Product:**

**Mounting brackets and stands for  
entertainment equipment**

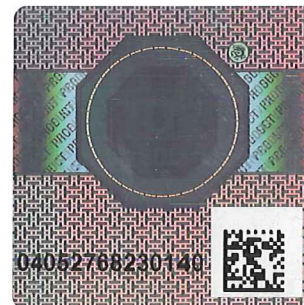
The product was tested on a voluntary basis and complies with the essential requirements. The certification mark shown above can be affixed on the product. It is not permitted to alter the certification mark in any way. In addition the certification holder must not transfer the certificate to third parties. See also notes overleaf.

**Test report no.:** 092-1309663-200

**Valid until:** 2019-12-18

**Date,** 2014-12-23

Page 1 of 5





America

**CERTIFICATE**  
**No. Z1 14 12 81824 031**

**Model(s):** CMA100\*, CMA101\*, CMA105\*, CMA110\*, CMA115\*, CMA270\*, CMA330\*, CMA345\*, CMA351\*, CMA360\*, CMA362\*, CMA365\*, CMA366\*, CMA372\*, CMA395\*, CMA440\*, CMA450\*, CMS115\*, CMS390\*, CMS391\*, CMS440\*, CMS445\*, CMSxxx\* series, CMSxxxx\* series, CMSxxxxxx\* series, CPA115\*, CPA116\*, CPA330\*, CPA365\*, CPA395\*, CPAXxxx\* series, KITExxxxxx\* series, KITECxxxxxx\* series, LC1A\*, LPK1\*, MCD6000\*, MCS6000\*, PCM2000\*, PDC2303\*, RPA\*, RPEU\*, RPM(A, B, C)U\*, RPMEU\*, RSEU\*, RSM(A, B, C, D)U\*, RSMEU\*, VCMEU\*, VMPR1\*  
 Where "x" indicates various column lengths as detailed on Attachment 1.  
 \*May be followed by additional alphanumeric characters indicating custom interface brackets, color and/or packaging.  
 (See Certificate Attachment 2 for color details)

**Brand Name:** CHIEF

**Parameters:** For additional information, ratings and details, see Attachments.

**Tested according to:** EN 60065/A12:2011

**Production Facility(ies):** 60473, 61083, 66881, 75095, 82110, 82349



America

# ATTACHMENT 1 Z1 14 12 81824 031

ZERTIFIKAT • CERTIFICATE • 認證證書 • СЕРТИФИКАТ • CERTIFICADO • CERTIFICAT

Model	Description	Weight Capacity (max.)	
		lbs	kg
CMA100*, CMA101*, CMA105*, CMA110*, CMA115*, CMA270*, CMA330*	Ceiling Mount Plate	500	226.8
CMA345*	Ceiling Plate with Flex Joint	500	226.8
CMA351*	Ceiling Mount Weldment	500	226.8
CMA360*	Ceiling Mount Bracket	250	113.6
CMA362*	Ceiling Mount Clamp	250	113.6
CMA365*	Ceiling Mount Plate	250	113.6
CMA366*	Ceiling Mount Clamp	250	113.6
CMA372*	Adaptor Bracket	500	226.8
CMA395*	Cathedral Ceiling Plate	500	226.8
CMA440*	Suspended Ceiling Mount	50	22.7
CMA450*	Suspended Tile Reinforcement	250	113.6
CMS115*	Ceiling Mount Plate	500	226.8
CMS390*, CMS391*	Adjustable Ceiling Mount Plate	500	226.8
CMS440*, CMS445*	Suspended Ceiling Mount	50	22.7
CMSxxx* series; Where xxx equals 003, 006, 009, 012, 018, 024, 036, 048, 060, 072, 084, or 096	Ceiling Mount Column, various lengths	500	226.8
CMSxxxx* series; Where xxxx equals 0203, 0305, 0406, 0507, 0608, 0709, 0810, 0911, or 1012	Adjustable Ceiling Mount Column, various lengths	500	226.8
CMSxxxxxx* series; Where xxxxxx equals 006009, 009012, 012018, or 018024	Adjustable Ceiling Mount Column, various lengths	500	226.8
CPA115*	Ceiling Mount Plate	150	68.0
CPA116*	Ceiling Mount Plate	75	34.0
CPA330*	Offset Ceiling Mount Plate	500	226.8
CPA365*	Truss Ceiling Mount Plate	500	226.8
CPA395*	Truss Ceiling Mount Plate	500	226.8
CPAExxx* series; Where xxx equals 030, 080, 100, 150, or 300	Ceiling Mount Column, various lengths	500	226.8
KITExxxxxx* series; Where xxxxxx equals 030045, 040080, or 080135	Ceiling Mount System, various lengths	25	11.3
KITECxxxxxx* series; Where xxxxxx equals 030045, 040080, or 080135	Ceiling Mount System, various lengths	25	11.3
LC1A*	Ceiling Mount	175	79
LPK1*	Low Profile Projector Mount	250	113.4



America

# ATTACHMENT 1 Z1 14 12 81824 031

Model	Description	Weight Capacity (max.)	
		lbs	kg
MCD6000*	Adjustable Ceiling Mount Plate	125	56.8
MCS6000*	Angled Ceiling Mount	125	56.8
PCM2000*	Ceiling Mount	200	90.7
PDC2303*	Dual Hanging Mount	200	90.7
RPA*	Projector Mount	50	22.7
RPEU*	Projector Mount	50	22.7
RPMxU*; Where x equals A, B, or C	Projector Mount, optional locks	50	22.7
RPMEU*	Projector Mount	50	22.7
RSEU*	Projector Mount	25	11.3
RSMxU*; Where x equals A, B, C, or D	Projector Mount, optional locks	25	11.3
RSMEU	Projector Mount	25	11.3
VCMEU*	Projector Mount	250	113.6
VMPR1*	Ceiling Mount	50	23.0

\*Optional additional alpha characters to indicate packaging or market. See ATT 2 for optional numerical code to indicate color.

Corrosion Protection – All ferrous metal parts are plated or painted to provide suitable protection against corrosion.

A label located on each product states “**CAUTION WEIGHT CAPACITY of XXXkg maximum. Use with products heavier than the maximum weight indicated may result in instability causing possible injury**” (see Table for weight capacities)

Assembly instructions are to be included with each product and shall identify the maximum load weight in kg.

Brand names include Chief, Sanus Systems, iC, Fusion, Cynergy, and Reaction.



America

# ATTACHMENT 2 Z1 14 12 81824 031

Details on \* used for model numbers.

SUFFIX	COATING/POLYMER & COLOR	SUFFIX	COATING/POLYMER & COLOR
000	Generic Applied Finish	032	RPM White
001	Black Smooth Powdercoat	033	Yellow Zinc
002	Black Wrinkle Powdercoat	250	ABS, Black
003	Black Anodized Hardcoat	251	ABS, Wight
004	Clear Zinc Plating	252	ABS, Natural
005	Black Zinc Plating	256	Acrylic, Black
006	Grey Wrinkle Powdercoat	257	Acrylic, Clear
007	Nickle Chrome Plating	258	Acrylic, Gray
008	Spartan Bronze Smooth Powdercoat	259	Acrylic, Smoked
009	Case Hardening	261	Delrin, Black
010	Zinc Phosphate	262	Delrin, Silver
011	Platinum Grey Powdercoat	263	Delrin, Natural
012	Purse White Powdercoat	264	Delrin, Panted Silver
013	Black E-Cote	267	Nylon, Gray Medium
014	Grey Primer	268	Nylon, Black
015	Black Zinc and Bake	269	Nylon, Natural
016	Flash Clear Zinc Plating	270	Nylon, Glass Filled 14%, Black
017	Black Oxide	271	Nylon, Glass Filled 14%, Natural
018	Nickel Chrome Rack Plating	272	Nylon, White
019	Light Grey Texture Powdercoat	273	Nylon, Dark Gray
020	Clear Anodized	274	Nylon, Dark Blue
021	Hard Chrome Plate	275	PVC, Black
022	Stardust Silver	276	PVC, White
023	Flint	277	PVC, Natural
024	Raven Black II	280	RPVC, Black
025	Black Anodized	281	RPVC, Silver
026	Stardust Silver	282	RPVC, White
027	Silvadillo	283	RPVC, Natural
029	Vulcan Black	286	UHMW, Natural, White
030	RPM Black	287	UHMW, Black
031	RPM Silver		