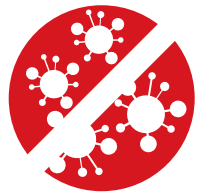




## Kindermann Touchdisplays

Interactive touch panels for a healthy working environment

**We make it easy!**



**Antibacterial-coated,  
front glass**

## Kindermann Touchdisplays

**With its touch surface and anti-bacterial front glass, the Kindermann TouchDisplay is perfect for a modern and healthy classroom and meeting room.**

The Kindermann TouchDisplays are intuitive and do not require user training. Thanks to pre-installed apps and software, it can immediately be used in educational as well as business environment. The integrated BYOD technology allows every participant to share its content without cable connection. If this isn't good enough by half, the Kindermann TouchDisplays have an outstanding price-performance ratio.

20 touchpoints at 4K UHD resolution, an antibacterial surface for hygienic collaboration even with many users, a high-precision infrared touch frame for accurate object recognition and much more – we make teamwork and presentation easier.



Antibacterial-coated, diffusing front glass



UHD/4K resolution



20 touchpoints



Object recognition



Ambient light sensor & Low Blue Light function



Connections and operation buttons conveniently in the front



OPS slot



Android 8 on board



Intuitive user interface

Built-in Wifi (2.4 & 5 GHz) and pre-installed BYOD software solution for wireless presentation of notebooks, tablets & smartphones

OPS PC slot

2x HDMI 2.0 / 1x DP Input

Android 8 on Board with intuitive UI

HDMI 2.0 out

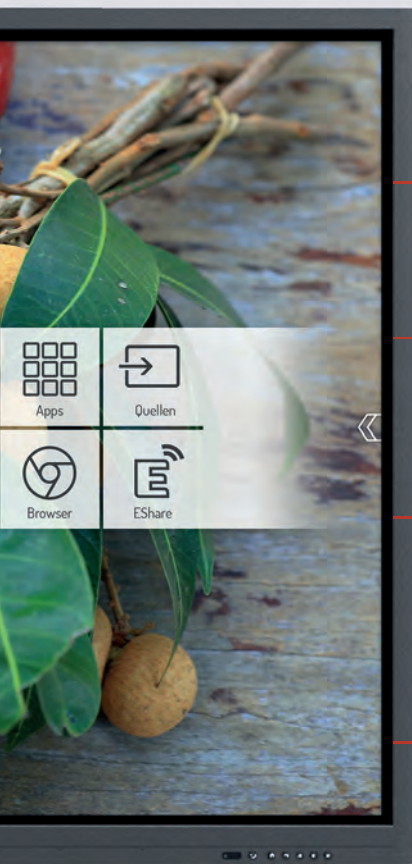


USB 3.0 port - connected to the OPS PC

Front universal USB ports - accessible through Android & OPS

Front touch USB & HDMI input

Magnetic area for two styli (supplied)



Handles -  
for easy installation

UHD/4K  
resolution panel

Discret slim  
frame design

Eye friendly:  
ambient light sensor

Easy access:  
front buttons

### Preinstalled apps

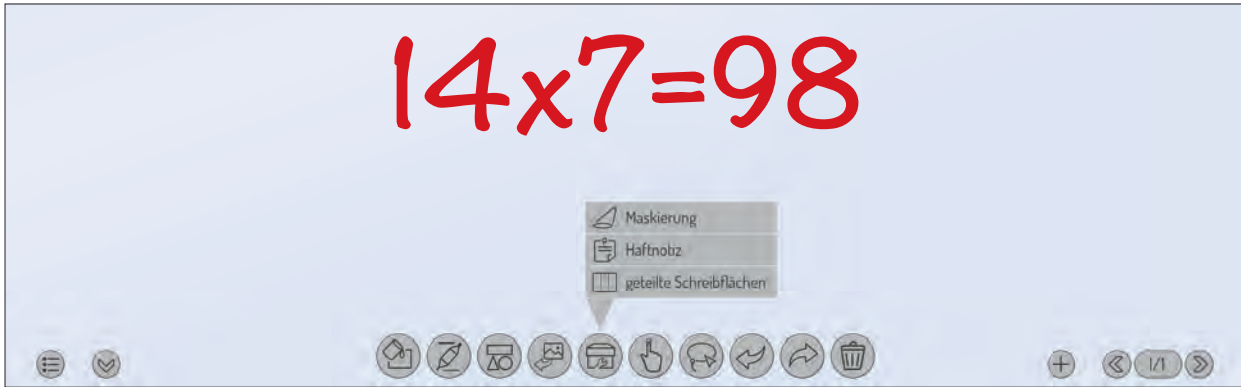
- Chromium - web browser
- Eshare - BYOD (Bring Your Own Device)-solution for the wireless presentation of content
- File manager - with integrated photo, video and audio player
- WPS Office - to view and edit Word-, Excel- and PowerPoint files
- Adobe Reader - to view PDF file
- Photo Gallery
- Open Camera - to connect and display cameras or visualizers
- Open Street Map - free world map with geographical data
- Newpipe - High performance Youtube Player

## Software Features:

### Kindermann Whiteboard App

The app running on the SoC of the touch panel allows user making notes, drawing sketches like on a real whiteboard just by using the tip of finger, without connecting any external PC.

There are various background images and lines to choose from. If required, individually background images can be uploaded. Of course the so created content can be saved and shared.



### Annotation Funktion

The annotation function can be activated via sidebar. This allows user to annotate on any image displays, whatever source is currently selected.



The helpful tools are directly accessible via the home screen

- Screen lock
- Adjust volume
- Calculator
- Timer
- Help
- Overview/selection of active apps

Ref. No.	Kindermann TD-1055 <sup>2</sup> -S	Kindermann TD-1065 <sup>2</sup> -S	Kindermann TD-1075 <sup>2</sup> -S	Kindermann TD-1086 <sup>2</sup> -S	
	3050 000 011	3050 000 012	3050 000 013	3050 000 014	
Panel	Diagonal / visible area	55" - 1210 x 680 mm	65" - 1428 x 804 mm	75" - 1647 x 927 mm	86" - 1895 x 1066
	Backlight	Direct LED			
	Resolution / side ratio / colour depth	3840 x 2160 (pixels) - 16:9 - 10bit (1.07 billion colours)			
	Orientation of use / maximum service life (daily)	Landscape format / 18 hours			
	Brightness	350cd/m <sup>2</sup> (typ.)	450cd/m <sup>2</sup> (typ.)	450cd/m <sup>2</sup> (typ.)	400cd/m <sup>2</sup> (typ.)
	Contrast ratio	1300:1 (typ.)	1200:1 (typ.)	1200:1 (typ.)	1200:1 (typ.)
	Contrast ratio (dynamic)	4000:1	4000:1	4000:1	4000:1
	Response time	6ms (typ.)	6ms (typ.)	8ms (typ.)	8ms (typ.)
	Frame rate	60Hz			
	Viewing angle	178°(H) / 178°(V)			
	Image mode	Standard/Soft/Users/Bright			
	Touch	Minimum lifetime	50.000 hrs		
Touch technology		Infrarot - surface light wave			
Number touchpoints		20			
Front glass		Tempered glass, 4 mm - MoHS7 - anti-glare, transparent and <b>antibacterial</b>			
Transmission		>88%			
Minimum object size, Precision		1.6 mm, ±1 mm			
Response time		<10 ms			
Driver		Plug and Play (multitouch driver for MacOS available; Linux supports single touch)			
Operation		Finger, control pen with soft peak or any comparable object			
Connection		USB2.0 Full speed - male - TypB			
Compatible		Windows 7/8/10, Linux, MAC OS, Android			
Speaker		Audio Out Power	2 x 15W @ 8Ω		
	CPU/GPU	Quad Core, ARM Cortex A53, 1.5Ghz, MaliG51			
	RAM/ROM	3GB / 32GB			
	WiFi	802.11 a/b/g/n - Dual Band 2.4G and 5GHz			
	OS	Android 8.0			
Included Software (Android)	Basic functions	Kindermann Whiteboard app with annotation function, screenshots, erase gesture, calculator, spotlight, timer, calendar			
	File Manager	Yes, photo-, video-, audioplayer included			
	Office/PDF Viewer	WPS Office, Adobe Reader			
	Browser	Chromium			
	BYOD Wireless streaming	Yes, Eshare			
	Additional apps	OpenCamera, OpenStreetmaps			
Menu languages	Available	20 languages			
	Public-USB (Android&Windows)	2 x ( 2.0, type-A, female)			
Front connections	HDMI 2.0 input	1			
	OPS USB Port	1 x (3.0, type-A, female)			
	Touch-USB	1			
	OPS Slot	1 (power supply 19V(DC)/5A)			
Lateral connections	HDMI output	1			
	SPDIF output (digital output)	1			
	Touch-USB	1			
	Android-USB	2 x ( 2.0, type-A, female)			
	DP input	1			
	HDMI 2.0 input	2			
	LAN IN/OUT	2			
	RS232	1			
	YPbPr / AV in / AV out	1 / 1 / 1 ( adapter required)			
	Audio output (3.5 mm jack)	1			
VGA / Audio (3.5 mm jack) input	1 / 1				
Power supply	Input voltage, connection	100 V - 240 V/AC, 50/60 Hz - cold appliance socket			
	consumption (typically)	approx. 143W	approx. 171W	approx. 264W	approx. 375W
	Standby consumption	<0.5W			
Environmental conditions	Temperature - operation	0 - 40°C			
	Temperature - storage	-10 - 60°C			
	Air humidity - operation	20 - 80% non-condensing			
	Air humidity - storage	10 - 60% non-condensing			
Dimensions / Material	Dimensions display (mm) (WxDxH)	1299 x 94 x 789	1506 x 96 x 901	1736 x 104 x 1035	1992 x 113 x 1183
	Dimensions packing (mm) (WxDxH)	1420 x 245 x 910	1660 x 245 x 1045	1880 x 280 x 1160	2140 x 280 x 1340
	Net weight (approx. kg)	28,5	42	58	77
	Gross weight (approx. kg)	38	57	75	100
	Case	Aluminum/metal			
	Frame width (T/B/L/R)	27\27\27\47 mm	27\27\27\47 mm	27\27\27\47 mm	28\28\28\48 mm
	VESA	4 x M6 400 x 400 mm	4 x M8 600 x 400 mm	4 x M8 600 x 400 mm	4 x M8 700 x 400 mm
	Accessories	Included in delivery IR remote control, power cable (3 m), USB cable (3 m), HDMI cable (3 m), 2x control pen, user manual			

## Accessories

### Height adjustable mounting solutions for touch panels

The height-adjustable mounts by Kindermann are the ideal complement to our Kindermann touch displays.

Whether for Business or Education, we have the right solution for interactive work for all situations.



Easy & fast height adjustment – manual or electrical



Ergonomic also for wheelchair users



Durable products with high quality standards  
*(confirmed by endurance tests)*



Easy & fast installation



Developed & Produced by Kindermann



Ideal for use with IFPD



Solutions for education



Solutions for business



Great price-performance ratio



### Kindermann counterweight system

- High-quality, durable pylon system for an effortless, manual height adjustment
- Optional wings as additional analogue writing space (white, green or printed with lines)
- Developed and tested according to the standard DIN-EN 14434
- Wide range of accessories and expansions such as pen / keyboard tray



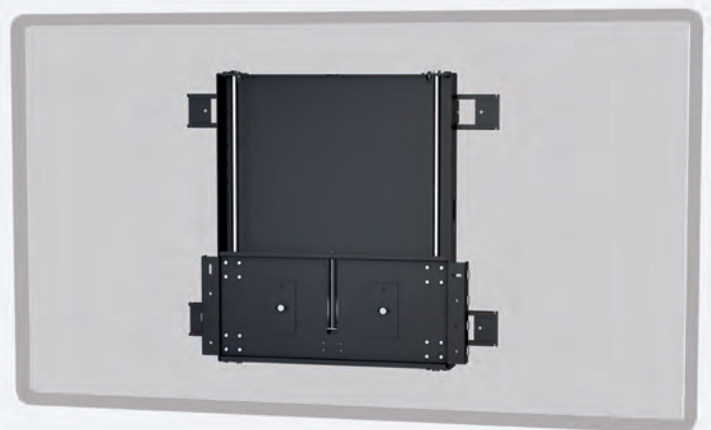
## Kindermann DisplayLift

- Three sets available:
  1. Floor standing and wall installation
  2. Freestanding installation with floor plate
  3. Mobile cart with castors
- Electrical height adjustment
- Way of travel: 50 cm



## Kindermann DisplayShift

- Manual height adjustment for displays from 57 – 90 kg
- Invisible to the user
- Floor stand available as an option for installation on lightweight walls



## Further accessories

### Kindermann Klick & Show

#### The powerful BYOD (Bring your own Device) 4K Wireless Presentation System

- No driver software required for HDMI and USB-C dongles
- PC / MAC compatible
- Free Android App or Apple Airplay
- Low-latency 1080p transmission
- 4K / 60Hz HDMI 2.0 output
- Supports 4x split screen
- Transmitter for USB-A, HDMI and USB-C Ports
- Separate employee and guest network
- Dongles with vibration feedback
- Easy and flexible use



More information see [www.klickandshow.com](http://www.klickandshow.com)

### Kindermann signal management solutions

#### For example the Konnect flex 45 HDMI/USB 2.0 transmitter for wall and CablePort (desktop casing) installation

- Transfers HDMI and USB 2.0 signals up to 60 m via a single category cable
- Resolution up to 1080p
- Inputs:
  - 1 x HDMI
  - 1 x USB 2.0 Typ B (Host)
  - 2 x USB 2.0 Typ A (Hub, all female)
- The suitable receiver, such as the [EX-HDU-R - HDMI/USB/Audio Receiver](#), is required on the display side





## Kindermann OPS-PCs

### For local invisible installation

- Available with Intel Core i3, i5, i7 processors
- 8/16 GB DDR4 RAM
- SSD
- Integrated Intel® HD Graphics 620
- Supports 4096 × 2304 @ 60Hz on DP and HDMI
- External interfaces:
  - USB
  - 1 x HDMI
  - 1 x RS232
  - 1 x RJ45 Gigabit Ethernet
  - 2-in-1 headset connection (3.5 mm jack)
  - Wifi and Bluetooth
- Incl. Windows 10 Pro preinstalled – not license



## Kindermann CommuniKam

### Our UHD conference camera CommuniKam K120M enables easy entry into the world of software-based video conferencing.

By simply connecting the camera via USB 3.0 to your computer the setup is done and you can start your video conference at a resolution of up to 2160p/30 Hz. Due to the camera's wide-angle lens with 120° field of view it fits perfectly into huddle rooms and small conference rooms.

Two integrated microphones provide full voice pickup and covering a distance of up to 12 meters. The camera is delivered with a bracket that fits with almost every display or can be used free-standing.

- Integrated echo-cancelling
- 8 x digital zoom with ePTZ
- Plug & Play (UVC 1.0 ~ UVC 1.5)
- Operating systems: Windows 8.1 & 10, macOS 10.10, Google Chromebook version 29.0.1547.70 and Linux
- Dimensions without bracket (WxHxD): 19.4 x 3.4 x 4.2 cm



## Soundbar

### Audac 2.1 Soundbar IME01/B

- 2.1 Soundbar in elegant design
- Dimensions without bracket 100 x 6 x 11 cm (WxHxD)

- Output power:
  - 2 x 15W / 1 x 30W
  - 1 x 2,5 inch woofer
  - 2 x 1,75 inch tweeter

- Inputs:
  - 3,5 mm jack
  - HDMI ARC
  - SPDIF
  - Bluetooth





**Projectors**



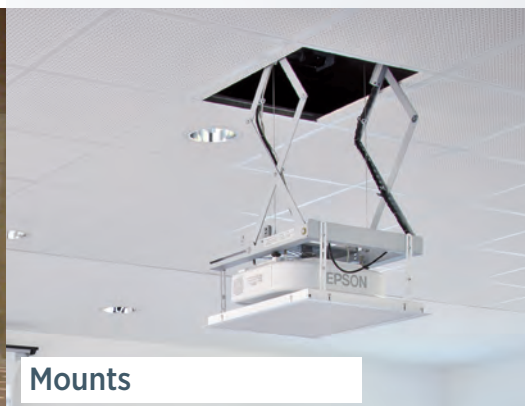
**Displays**



**Mounting solutions**



**Screens**



**Mounts**



**Konnect socket systems**



**Signal management**



**Lectern**



**Desktop CablePorts**



**Visualizer**



**Digital Signage**



**Media furniture**