



***TOUCHING  
FASCINATION***



"IT IS THE MOMENT  
OF THE FIRST TOUCH,  
THAT OPENS  
THE WORLD TO US."

*RAINER MARIA RILKE*

# Content

04	<b>USE CASES</b> – TOUCH DISPLAYS as flexible as your requirements. There's a wide range of possible applications: in business, education and training environments, showrooms, and museums.
22	<b>TD-11<sup>2</sup> TOUCH DISPLAYS</b> – ideal for modern working and learning environments. Kindermann knows what matters: intuitive operation, future-proof features, extensive connectivity options, and outstanding value for money.
24	<b>TD-40 TOUCH DISPLAYS</b> – tablet experience in XXL – up to 86 inches. With brilliant image quality, intuitive operation, and flexible mounting (including tabletop mode), the TD-40 is the ideal interactive solution for training rooms, showrooms, and museum installations.
26	<b>SOTI MOBICONTROL</b> – the remote device management solution for education and business. SOTI is a flexible, platform-independent device management system for controlling all IT systems, regardless of manufacturer and operating system.
28	<b>DISPLAYSHIFT<sup>2</sup>-SERIES</b> – the durable and sustainable solutions for fast, smooth and stepless height adjustment of interactive displays up to 105 inches in size.
30	<b>ACCESSORIES</b> – for presentation, collaboration or video conferencing – we offer accessories to complement your touch display and make it a complete solution for every conference room and classroom.
32	<b>FACTS AND MORE</b> – technical data, features and details at a glance – compact, clear and complete.

# ***TOUCHING FASCINATION***

With its state-of-the-art touch displays, Kindermann offers innovative solutions for modern working environments and digital classrooms. The displays are characterised by their open system architecture and seamless interoperability. Kindermann touch displays impress with their precise technology, intuitive user interface and versatility. They can be flexibly integrated into existing infrastructures.

Experience the future of interactivity – open, connected and powerful – for classrooms, workplaces or special application.

## **Key features and benefits:**

- > High-resolution displays: Crisp, vibrant images – ideal for larger rooms.
- > Intuitive operation: Multi-touch technology for smooth interaction.
- > Durability & reliability: Rugged, long-lasting devices designed for everyday use.
- > Versatile integration: Compatible with a wide range of software solutions and peripheral devices.
- > Ergonomic design: Easy-to-use, user-friendly interface which enhances working comfort.
- > Versatile connectivity: USB-C, HDMI, PC-SLOT (OPS) and many other connections offer maximum flexibility.

## **Important functions and technologies:**

- > Infrared or PCAP touch: both technologies provide precise pen input and a natural writing experience.
- > Connectivity: Wireless and wired connections for a wide range of devices.
- > Smart annotation tools: Highlight, take notes and annotate in real time for creative and interactive sessions.
- > Collaboration & presentation: Supports seamless collaboration with tools such as Microsoft, Google Meet, Zoom and various whiteboarding software.
- > Flexibility: Available in various sizes and designs to suit any room concept.





# 1<sup>ST</sup> CLASS TOUCHDISPLAYS

Kindermann touch displays offer the state-of-the-art technology for interactive teaching. The Android operating system combined with an intuitive user interface ensure that you can walk up and start teaching.

All essential functions, such as annotation and screenshots, are available at your fingertips. We've also paid attention to the small details that make everyday teaching easier – features like a timer, screen recording, and a spotlight.

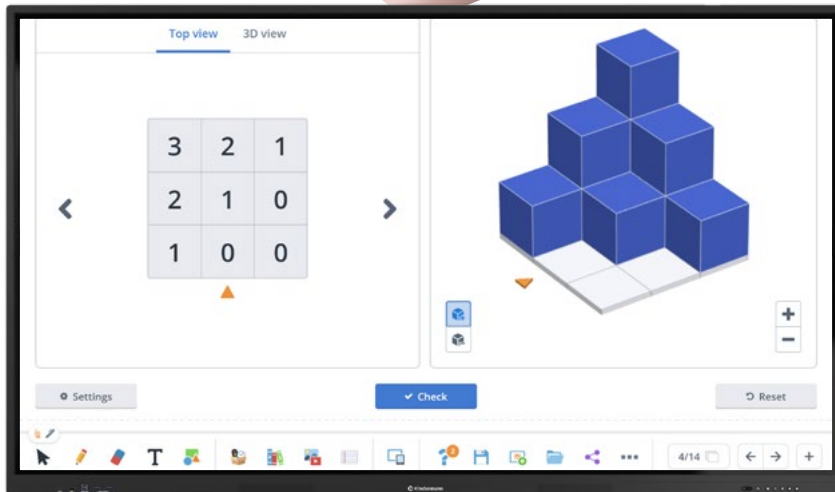
Once configured, the displays power on and off automatically, enabling lessons to start without delay and helping to reduce unnecessary energy consumption overnight. Our new touch surface delivers a writing experience that feels just like real paper.



**Kindermann TD-11<sup>2</sup>**  
supports Windows Ink.

This means that the passive pens are recognised as active Windows Ink pens – allowing you to draw directly in applications like PowerPoint without having to manually select a drawing tool.





## Teaching with Gynzy

Gynzy is a cloud-based teaching platform that transforms interactive classroom displays into powerful digital teaching tools. It offers a variety of features to enrich lessons and actively engage students.

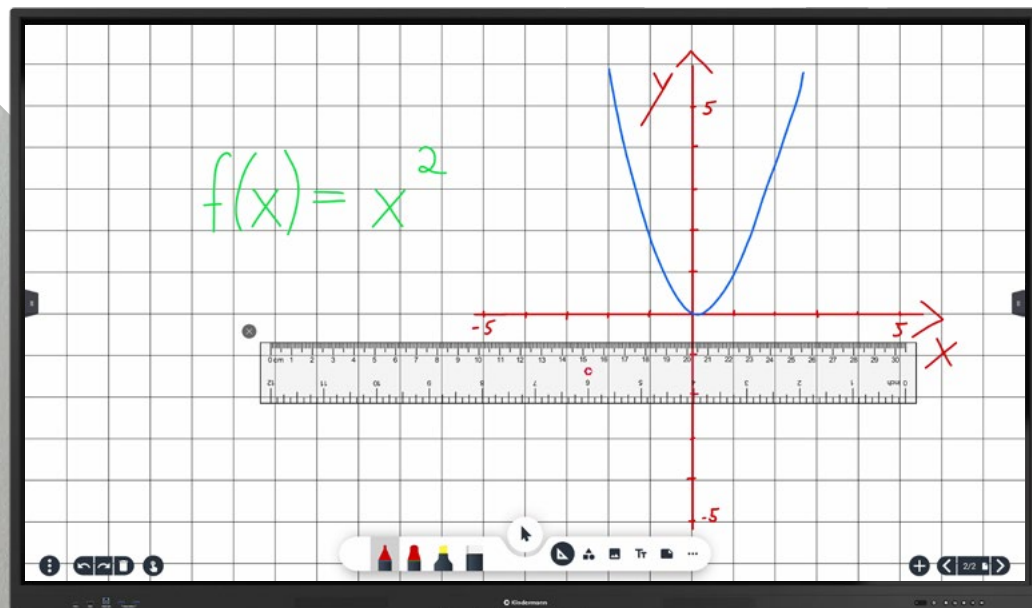
Gynzy supports teachers in making lessons more interactive and effective by providing digital tools that facilitate both the planning and delivery of lessons.



# LESSON LEARNED

Modern pedagogy demands for innovative technology that enhances lessons and fosters collaboration. The TD-11<sup>2</sup> touch display transforms any classroom into a digital learning environment. It opens up new possibilities for presentation and collaboration and, as a learning station, promotes independent and differentiated learning – individual, interactive, and motivating.





For project presentations, group work or as a learning station – the touch display promotes creative and interactive collaboration in the classroom.

#### The advantages are obvious:

- > **Open platform – high compatibility:** Kindermann touch displays are specifically designed to meet the needs of schools: an open system architecture, clearly structured and free from unnecessary features. The technology stays in the background – the focus is entirely on learning.
- > **Easy to use:** The intuitive user interface enables teachers and students to get started quickly and easily – switch on, connect and get started.
- > **Pre-installed Edu apps** offers real added value with direct access to verified learning content from the federal states. Content from the educational media library can also be used without a permanent internet connection.
- > **Save, edit and share content:** Lesson materials can be saved, edited, and easily shared via QR code within the local network.
- > **A wide range of connectivity options** ensures seamless integration into existing infrastructures. It doesn't matter whether you use iPads, tablets, laptops or other devices – the display is ready for the modern school day.
- > **Future-proof investment:** The TD-11<sup>2</sup> impresses with its well thought features and strong performance – ideal for the requirements of today and tomorrow. Thanks to the attractive price-performance ratio, the investment pays for itself quickly.



# HANDS-ON SCIENCE

The TD-40 touch display is an innovative solution for use in research and development or at universities. It offers the convenience and simplicity of a tablet, but in XXL sizes from 65 to 86 inches enabling seamless collaboration.





Wherever a precise and bright display is required – the TD-40 series of touch displays impresses with its stunning 4K UHD resolution of 3840 x 2160 pixels and a brightness of 600 cd/m<sup>2</sup>.

The display guarantees razor-sharp image quality even in bright environments. The TD-40 comes without a pre-installed Android operating system, which is a decisive advantage especially in security-critical areas – sensitive data remains protected and potential points of attack are minimized.

The pressure-sensitive stylus and capacitive touch surface ensure maximum precision, delivering an immediate and natural writing and user experience – just like on a Surface tablet.



# JOUR FIXE

The TD-40 touch display takes meeting efficiency to a new level. Interactive collaboration has never been easier.

The active pen allows writing just as precisely and comfortably as on a Microsoft Surface tablet. Content can be seamlessly edited the same way on tablet and display, enabling collaborative work without technical barriers.

In addition: The TD-40 doesn't come with Android operating system and offers maximum flexibility and security by using the integrated OPS slot.









# HUDDLE SPACE

Touch displays transform huddle spaces into ideal environments for spontaneous collaboration. Brainstorming, project coordination, or quick feedback – with just a few taps, teams can visualize ideas, take notes, and collaborate effectively. The intuitive operation and natural writing experience on the display support the creative process and make meetings more dynamic and productive.

With the Kindermann Whiteboard application, sketchnotes can be created precisely and individually – perfect for agile working methods and visual thinking. Content can be edited, saved and further edited at any time – ideal for dynamic teams.

## The Whiteboard application

The Kindermann Whiteboard app impresses with its clear, minimalist design, focus is on content. Thanks to individually customizable pen styles, the application is ideal for sketchnotes and creative visualizations.



Lined, squared, or blank – the background can be customized to suit your needs. Content can be enriched with images, screenshots, or sticky notes, then saved at the end of the meeting or lesson, further edited, or shared via QR code within the local network.



# ***EASY MEETING***

The requirements for meeting rooms have changed significantly. Today, the focus is on hybrid and flexible communication – via Microsoft Teams, Zoom, Google Meet or other platforms. Touch displays can play a central role: they act as an interactive collaboration solution and enable efficient, intuitive meeting management.

This is exactly where the Kindermann TD-40 touch displays shine. With their intuitive operation, brilliant image quality – even in bright rooms – and the natural writing experience thanks to the capacitive touch surface and active pen,

they offer everything that modern meetings require. In combination with high-quality UC hardware such as video soundbars, cameras, and speakerphones, they form a powerful, professional setup that integrates seamlessly into any environment.









Inspire your visitors with interactive content – TD-40 touch display brings information to life and becomes the highlight of any exhibition.



# MADE TO EXCITE



The Kindermann TD-40 touch display is the ideal solution for modern exhibitions, museums, and showrooms where content needs to come to life.

Thanks to its flexible tilt function, the display can be perfectly adapted to various use cases – whether standing, seated, or in motion. The intuitive touch interface allows visitors to explore interactive content independently and in depth – without barriers or prior technical knowledge. Brilliant image quality and a natural touch experience, made possible by optical bonding, ensure that every presentation appears high-quality and contemporary.

In this way, the touch display becomes an integral part of an immersive exhibition experience – creating real added value in visitor engagement.



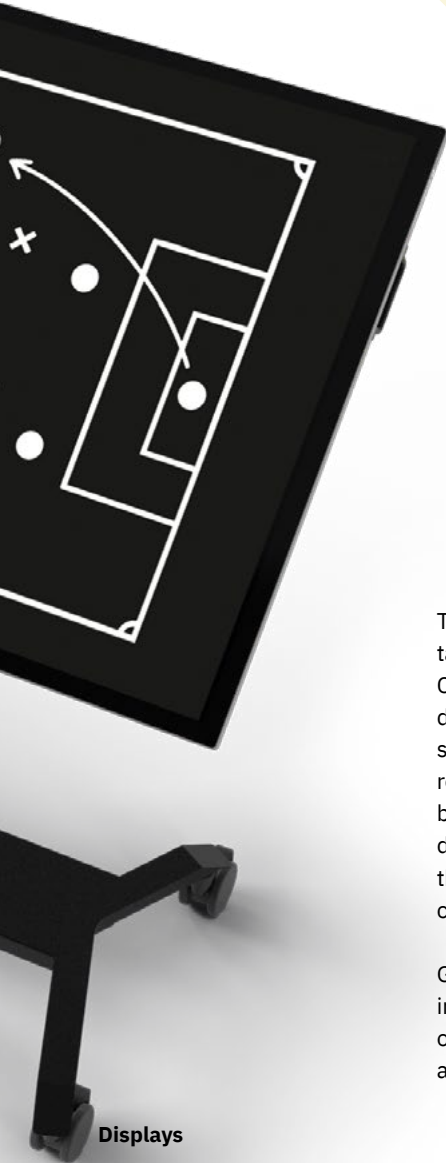
»» GEMEINSAM  
GROSSES  
SCHAFFEN

# TACTIC TOUCH

Quickly and interactively analyze matches, make immediate tactical adjustments and communicate clearly within the team – thanks to the new TD-40 touch display, the team dressing room becomes a true command center. Thanks to its tiltability and flexibility, the display offers optimal visibility and can be perfectly adjusted for every half-time briefing.

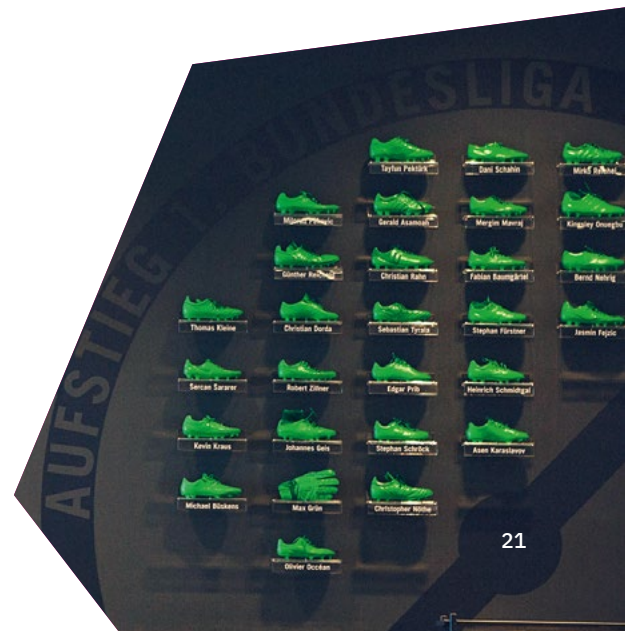






The TD-40 touch display is ideal for vivid tactical briefings in the locker room. Coaches can visualize and adjust tactics directly on the screen and explain game situations quickly and clearly. Thanks to the responsive touch function, key scenes can be marked instantly. The large, flexible display and practical tilt function ensure that all players have an optimal view and can be actively involved in the analysis.

Game recordings can be played back instantly to review mistakes or highlights on the spot – making every match analysis more effective and interactive.



# TD-11XX<sup>2</sup>

## Features

---

**Easy operation:** The user interface developed by Kindermann offers quick access to all functions, intuitive structured menus and simple operation without training.

---

**Zero Gap technology:** Combining glass and panel without any distance improves image quality, reduces reflections and provides a natural writing experience.

---

**Android 13 operating system:** The TD-11XX<sup>2</sup> displays are equipped with an up to date Android system.

---

**Versatile connectivity:** HDMI, USB-C, PC-SLOT (OPS) and many other connections offer maximum flexibility.

---

**Powerful sound:** A built-in 2.1 audio system with 60W output ensures excellent sound quality.

---

**Wireless transmission:** Bidirectional screen mirroring enables content sharing from the display to other devices or vice versa.

---

**Useful software:** Preinstalled apps such as ANTON, Edu-CAP and Geogebra applications provide real added value in everyday school life.

---



## The next generation touch displays

We all just want to work together – no one wants to wrestle with technology.

Switch on, connect, and get started – that's exactly what the TD-11<sup>2</sup> series touch displays deliver. Available in 55", 65", 75", and 86", these displays combine modern technology with user-friendly design.

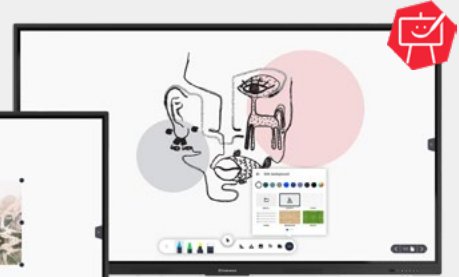
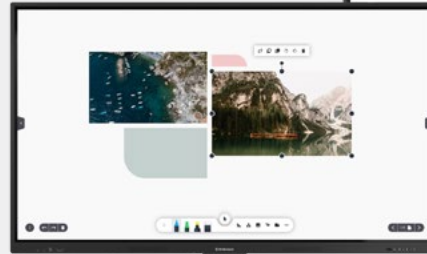
Thanks to the intuitive user interface developed by Kindermann, users can navigate the system effortlessly from the very first moment. A wide range of connectivity options and future-proof equipment at an excellent price-performance ratio leave nothing to be desired.



*Kindermann TD-11xx<sup>2</sup>  
Visit our website  
for more information*



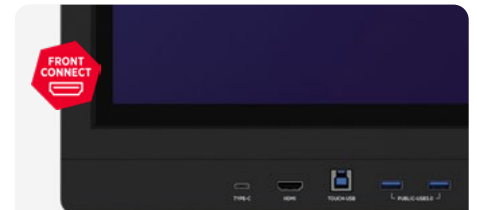
## Kindermann Whiteboard App



## TD-11XX<sup>2</sup> SERIES



**Buttons on the front**



**Connections on the front panel**

  
**Android  
13**

**55-86"**  
Display size



# TD-40XX

## Features

---

**Natural operation:** The capacitive touch surface (PCAP) enables intuitive operation, just like on a tablet.

---

**Maximum precision with the pressure-sensitive stylus:** Thanks to the active, pressure-sensitive stylus, you can achieve precise inputs and can work seamlessly on both the TD-40 and on Microsoft Surface devices.

---

**Operation without operating system (no Android):** Increases security and reduces unnecessary updates.

---

**Versatile connectivity:** HDMI, USB-C, PC-SLOT (OPS) and many other connections offer maximum flexibility.

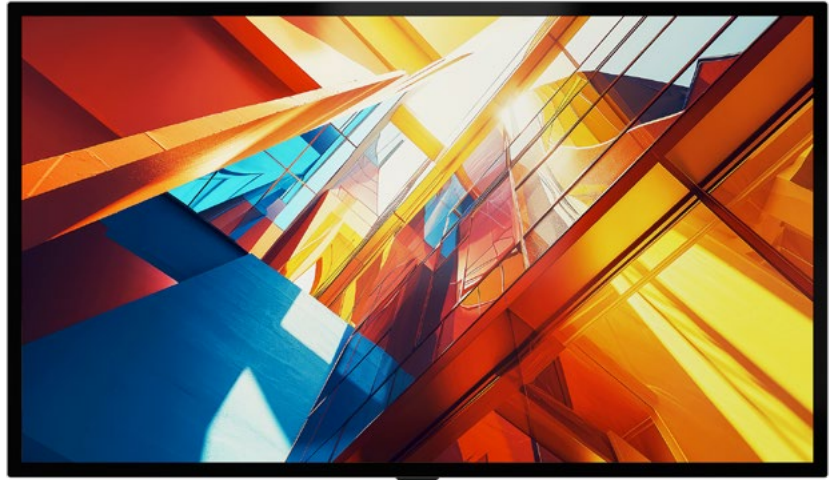
---

**Powerful sound:** A built-in 2.1 audio system with 60W output ensures excellent sound quality.

---

**Flexibility through tilting:** The displays (in all available sizes) can be used in a tilted or flat table position – ideal for interactive applications, e.g. in museums or at the point of sale.

---



**Touch displays for business and education:** Precision meets functionality. Thanks to capacitive PCAP technology and the active stylus, users benefit from a highly precise and comfortable writing and touch experience. The displays also offer the option of being tilted or used flexibly as a desktop application.

The capacitive touch surface makes working as easy and natural as using a tablet, while the active stylus ensures precise input. The displays can be tilted or used flat straight from the factory – ideal for interactive applications in museums or at the point of sale. In combination with a motorized, height-adjustable stand that continuously adapts the height and tilt of the display, this creates a highly flexible solution for a wide range of use cases.



**Kindermann TD-40xx Touchdisplays**  
Visit our website  
for more information



Super bright 600 cd/m<sup>2</sup>



SAFE



ENERGY-EFFICIENT



USB-C  
PLUG&PLAY



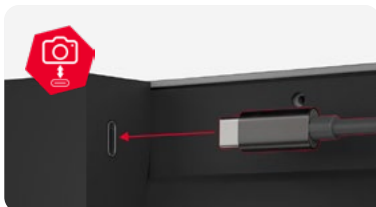
2.1 AUDIO  
60W



Up to  
**86"**  
Display-  
Diagonal

**NO  
OS**

Change of perspective



Active  
Pen

**TD-40**



High-quality  
materials

# ***SOTI MOBICONTROL***

Remote device management for schools and educational institutions – MobiControl is a flexible, platform-independent solution to control all IT systems at your school, regardless of manufacturer or operating system.



## **Cross-Platform Management**

iOS, iPadOS, ChromeOS, Android, Windows, macOS, tvOS, or Linux – MobiControl provides a unified platform for managing all major operating systems. This simplifies the administration of heterogeneous IT environments and enables flexible device selection for your educational institution.



## **Manage interactive touch displays from multiple manufacturers**

MobiControl allows to manage interactive touch displays from various manufacturers – all within a single platform. No other solution supports such a wide range of brands and models.



## **Securely manage EDLA-compatible devices**

The central management of Google Accounts allows EDLA-compatible devices to be managed in compliance with data protection regulations.



## **Open to school solutions**

IServ, Untis, ASV, Apple School Manager, or integration with various single sign-on solutions – MobiControl offers open and flexible device management.



## **GDPR-compliant and secure**

MobiControl meets all the requirements of the General Data Protection Regulation (GDPR) and guarantees the highest security standards for sensitive school data. With extensive encryption options and granular access controls, your data remains protected at all times.



## **Data sovereign hosting**

European cloud data center or on your own server – you decide where your MobiControl server instance is hosted. On-premise hosting is available from Kindermann at no extra cost.

## ***WANT TO LEARN MORE?***

If you are interested in SOTI MobiControl, please contact [sales@kindermann.de](mailto:sales@kindermann.de)







**Kindermann Displayshift**  
Visit our website  
for more information

DisplayShift® enables intuitive, stepless height adjustment of touch displays, allowing for ergonomic working and presenting in schools and conference rooms. Want to combine height adjustability with mobility? No problem – simply pair it with the Kindermann Sprinter mobile stand.

# ***RISING HIGH***

With its DisplayShift<sup>2</sup> series, Kindermann offers safe and sustainable solutions for fast, smooth and stepless height adjustment of interactive screens up to 105 inches in size.

Thanks to its mechanical height adjustment, even large displays can be adjusted smoothly and continuously by approximately 54 or even 69 cm – significantly faster than motorized alternatives. This ensures ergonomic use for people of all sizes, including wheelchair users.

Special highlight: The DisplayShift<sup>2</sup> is completely concealed behind the display – the mechanism remains invisible, even at the highest or lowest position.

Quick and easy installation was a key design priority: DisplayShift<sup>2</sup> is delivered largely pre-assembled.



## **More flexibility with whiteboard wings**

With the addition of whiteboard wings the product becomes DisplayShift<sup>2</sup> Wings. The panel surfaces can be individually selected by color and ruling. With an extended height adjustment of up to 69 cm, DisplayShift<sup>2</sup> Wings it is ideal for classrooms and training rooms.

All our DisplayShift<sup>2</sup> guarantee a maximum flexibility and stability in use.

## **Features**

---

### **Easy**

The DisplayShift<sup>2</sup> can be adjusted to the desired height in no time. No need to wait as with electric height adjusters.

---

### **Infinitely adjustable**

The DisplayShift<sup>2</sup> models are characterized by their ease of movement. Even heavy displays can be adjusted manually and stepless easy and quickly. The result is an ergonomic working environment for users of all size.

---

### **Cost-efficient**

Quick and easy installation, many years of use without maintenance and electricity-free use save you money.

---

### **Reliable**

DisplayShift<sup>2</sup> stands for product availability: fast delivery times, a 5-year warranty with on-site replacement service, and 10 years of spare parts availability for our own products.

---

### **Robust and durable**

With over 50,000 cycles in the endurance test and corresponding TÜV certification in accordance with DIN EN 14434, the Kindermann DisplayShift<sup>2</sup> meets the highest safety requirements.

---

### **Designed for the education**

Developed in close cooperation with education professionals the Kindermann DisplayShift<sup>2</sup> Wings is tailored to meet the specific needs of modern learning environments.

---



### Kindermann EShare 4K USB-C dongle

Wireless presentation in 4K – simply plug in via USB-C and share content in top quality.

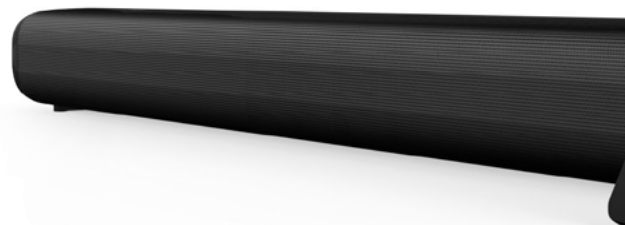
Article no. 3053000004



### Soundbar Elite

Powerful 60-watts with DeepBass technology, versatile connection options and clear sound – ideal for schools, conference rooms and professional presentations.

Article no. 8715000600



### Kindermann OPS PCs with Windows or Android

We offer a wide range of powerful OPS PCs with Windows or Android OS impresses with their computing power and large variety of connectors

Article no. 3051000xxx

## ONE MORE THING...

Presentation, collaboration or video conferencing – the right accessories complement your touch display and make it a complete solution for every conference room and classroom.







**CommuniKam KVB120 videosoundbar**  
Compact all-in-one solution for video conferencing – with camera, microphone and powerful sound in one device.

Article no. 5004000002



### Klick&Show

Wireless presentation and efficient collaboration – the versatile Klick&Show product range always offers the right solution for BYOD and BYOM in business and education.

[www.klickandshow.com](http://www.klickandshow.com)



### USB-C AOC cable

Full-featured USB-C AOC cable for reliable transmission of 4K60 video and USB data up to 10 Gbit/s – interference-free over distances of up to 15 m, ideal for use with touch displays.

Article no. 57730010XX

# ***FACTS AND MORE***

***DROP-IN  
FOR MORE***

[www.touchdisplays.eu](http://www.touchdisplays.eu)



## Technical specifications

Available screen sizes	55"; 65"; 75"; 86"
Resolution (native) in pixels	3840 x 2160
Aspect ratio	16:9
Color depth	10 bit (1.07 billion colors)
Brightness (typical)	up to 450cd/m²
Panel technology / backlight	IPS / direct LED
Expected panel lifetime	50.000 h
Touch technology	Infrared with high accuracy
Distance panel / glass	Zero/direct bonding
Touch points	40
Glass	Tempered glass, anti-reflective and highly transparent
Multitouch compatibility	Windows 10/11, Android, ChromeOS, MacOS X (driver required)
Single touch	Linux, MacOS X
Microsoft Pen protocol 2.0	support, passive pen
Loudspeaker	2.1 sound system, 2x 20W & 1x 20W
SoC	A311D2 OctaCore, 4x A73 @ 2.2 Ghz / 4x A53 @ 2 GHz , MaliG52 MP8
RAM (GB)	8
Internal storage capacity (GB)	64
WiFi	WiFi 6 – 802.11 a/b/g/n/ac/ax – Dual Band 2.4 / 5GHz, 2x2 MiMo
Bluetooth	5.0
Operating system	Android 13.0
BYOD	Eshare, support HDMI and USB-C dongle, native client software for various platforms, AirPlay, Chromecast (Miracast in Wifi Direct mode)
Software	Kindermann whiteboard app with annotation function, photo, video and audio player, file manager, Office, Adobe Reader, Firefox, Chromium and others
OPS-Slot	yes (JAE 80pin)
Front Connector	1x USB type-C (full featured, 65 W), 1x HDMI 2.0 in and 1x touch USB 3.x type-B, 2x USB 3.0 type A
Connector side/bottom	2x HDMI 2.0 in, 1x DisplayPort, 1x USB type-C (full featured, 15 W), 1x VGA in with audio 3,5 mm stereo jack, 3x touch USB 3.x type-B, 1x 3,5 mm jack Mic-in, 2x USB 3.x type-A, 1x USB 2.0 type-A (firmware) , 1x HDMI 2.0 out, 2x LAN (Gigabit) 1x RS232, 1x 3,5 mm stereo jack audio out, 1x Toslink (audio out)
Item number	55": 3050000061; 65": 3050000062; 75": 3050000063; 86": 3050000064

## TD-40XX

65", 75", 86"
3840 x 2160
16:9
10 bit (1.07 billion colors)
>600cd/m²
VA / direct LED
50.000 h
Capacitive PCAP and active pens
Optical bonding
20
Tempered glass, anti-reflective and highly transparent
Windows 10/11, Android, ChromeOS, MacOS X (driver required)
Linux, MacOS X
support, active pen
2.1 sound system, 2x 20W & 1x 20W
N/A
N/A
N/A
N/A
No operation system
optional, e. g. Klick&Show
N/A
yes (JAE 80pin)
1x USB type-C (full featured, 65 W ), 1x HDMI 2.0 in and 1x touch USB 3.x type-B, 2x USB 2.0 type A
1x HDMI 2.0 in, 1x VGA with audio in 3,5 mm stereo jack, 1x touch USB 2.x type-B, 1x 3,5 mm jack Mic-in, 2x USB 2.0 type-A (firmware), 1x HDMI 2.0 out, 2x LAN (Gigabit), 1x RS232, 1x 3,5 mm stereo jack audio out
65": 3050000052; 75": 3050000053; 86": 3050000054



**Picture credits:**

unsplash: nitish-goswami  
iStock: Lulu Studio  
AdobeStock: Gorodenkoff, MrJeans, somneuk, Thares2020,  
(JLco) Julia Amaral, Halfpoint, insta\_photos, Impact Photography  
Manufacturer

**Kindermann GmbH**

Mainparkring 3 | 97246 Eibelstadt | Germany  
Phone +49 9303 9840-0 | Fax +49 9303 9840-101  
Printed in Germany | 09/2024 | 0101012002

**[www.kindermann.com](http://www.kindermann.com)**

presented by:





